

- Dutch company (Oceanic Adventures)
- Polar expedition ship
- 170 passenger capacity, 72 crew



- Currently 146 people from 23 countries are still on the ship

	Rodent host	Syndrome	Case fatality rate (%)	Country
The Americas				
Sin Nombre virus	<i>Peromyscus maniculatus</i>	HCPS	35%	USA, Canada
Andes virus	<i>Oligoryzomys longicaudatus</i>	HCPS	21.4–35.9%	Argentina, Chile
Araraquara virus	<i>Bolomys lasiurus</i>	HCPS	44.5%	Brazil
Choclo virus	<i>Oligoryzomys fulvescens</i>	Fever, HCPS	12–15%	Panama
Laguna Negra virus	<i>Calomys laucha</i> , <i>Calomys callosus</i>	Fever, HCPS	11.7%	Paraguay, Argentina, Bolivia, Peru
Juquitiba virus	<i>Oligoryzomys nigripes</i>	HCPS	32.5%	Brazil
Europe and Asia				
Hantaan virus	<i>Apodemus agrarius</i>	HFRS	1%	China
Puumala virus	<i>Myodes glareolus</i>	HFRS (NE)	0.1–0.4%	Finland, Sweden, Belgium, Germany, France, Russia, northeast Europe
Dobrava virus	<i>Apodemus flavicollis</i> , <i>Apodemus ponticus</i>	HFRS	9.8–12.0%	Balkans, southeast Europe
Seoul virus	<i>Rattus norvegicus</i>	HFRS	<1%	Worldwide
Tula virus	<i>Microtus arvalis</i>	HFRS	..	Russia, Europe

All information was obtained from several sources.^{8,19-28} HCPS=hantavirus cardiopulmonary syndrome. HFRS=haemorrhagic fever with renal syndrome. NE=nephropathia epidemica.

The Americas

Hantavirus cardiopulmonary syndrome

Andes virus



Oligoryzomys longicaudatus

- Lungs
- Heart
- Vascular network
- Liver
- Kidneys

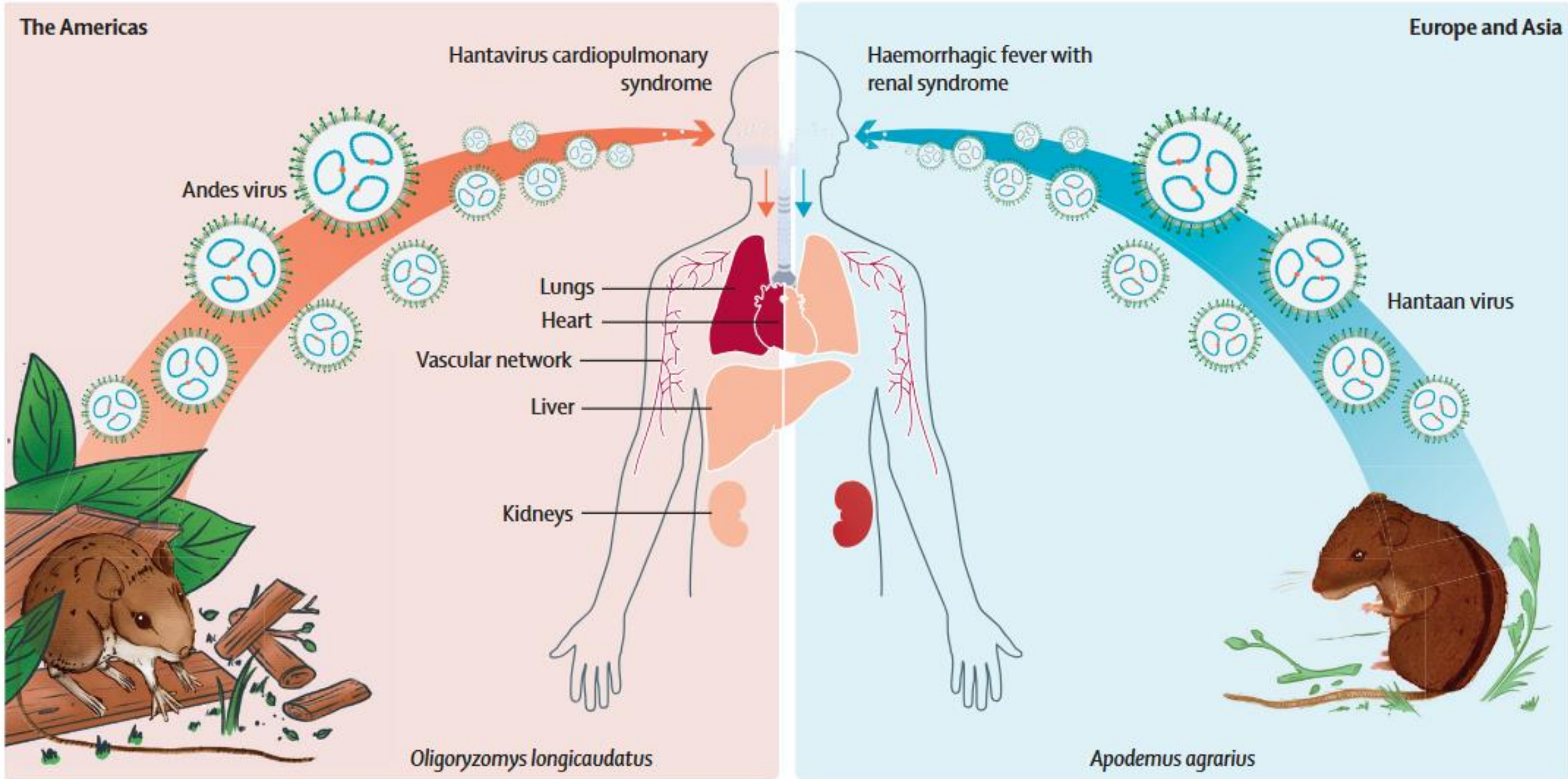
Europe and Asia

Haemorrhagic fever with renal syndrome

Hantaan virus



Apodemus agrarius



Hantaviruses

- Multiple different viruses that infect humans
 - Hemorrhagic fever and renal failure; hantavirus pulmonary syndrome
 - Specific geography, specific rodent hosts (not house mice!)
- Most disease is due to inhalation of rodent feces, urine, saliva
- Andes virus has reported with person-to-person transmission
 - 16/476 household contacts with illness: 3 definite, 9 probable person-to-person
 - 7 cluster investigations with person to person transmission reported – 17-38 secondary cases

Vial PA, Lancet Infect Dis. 2023:e371-e382. doi: 10.1016/S1473-3099(23)00128-7

Toledo J, J Infect Dis. 2022 Oct 17;226(8):1362-1371.



- April 1: MV Hondius leaves Argentina
- April 6: case #1 develops illness
- April 11: case #1 dies
- April 24: MV Hondius arrives St. Helena
 - ?29 ?40 people leave (booked end to their tour)
 - Case #2 (wife of case #1) leaves ship
 - Flies to S. Africa, refused boarding on next flight because of illness, dies in S. Africa April 26
- April 27: Case #3 evacuated from Ascension Island
- May 2/3: Case #4 dies on ship
 - Case #5 – close contact of case #4
 - Case #6 – another passenger
 - Case #7 – ship's doctor
 - Case #8 – another crew member
- Plus, as of May 7
 - Case #9: Swiss person who left ship in St. Helena
 - ?Stewardess on flight case#2 was refused boarding on

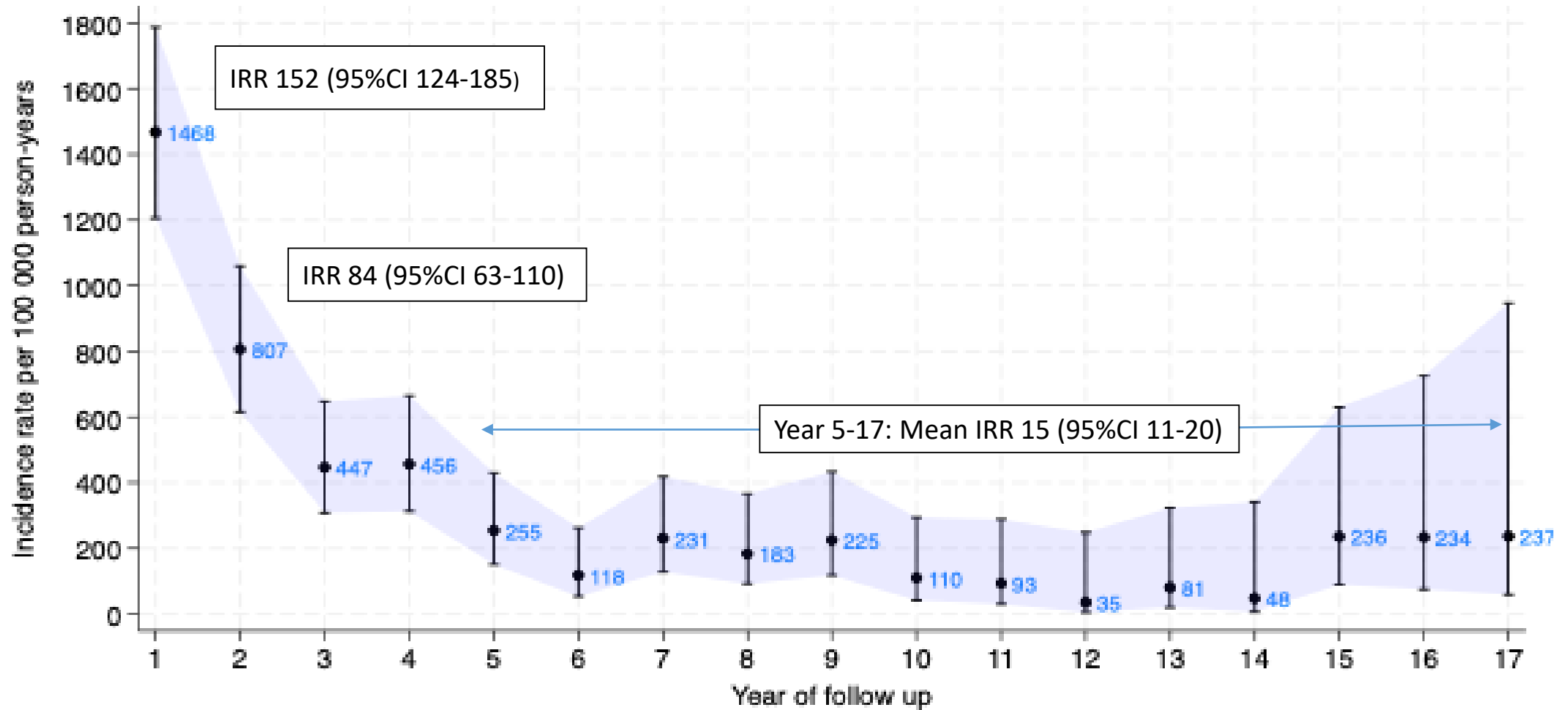
TIBDN Surveillance

- Group A Streptococcus – sterile site isolates (culture and PCR)
- *S. pneumoniae* – sterile site (including PCR) and respiratory isolates
- Group B streptococcus – sterile sites
- Carbapenemase producing Enterobacterales and *Acinetobacter spp.*
 - Including sink isolates
- Invasive meningococcal disease (isolates to PHOL)

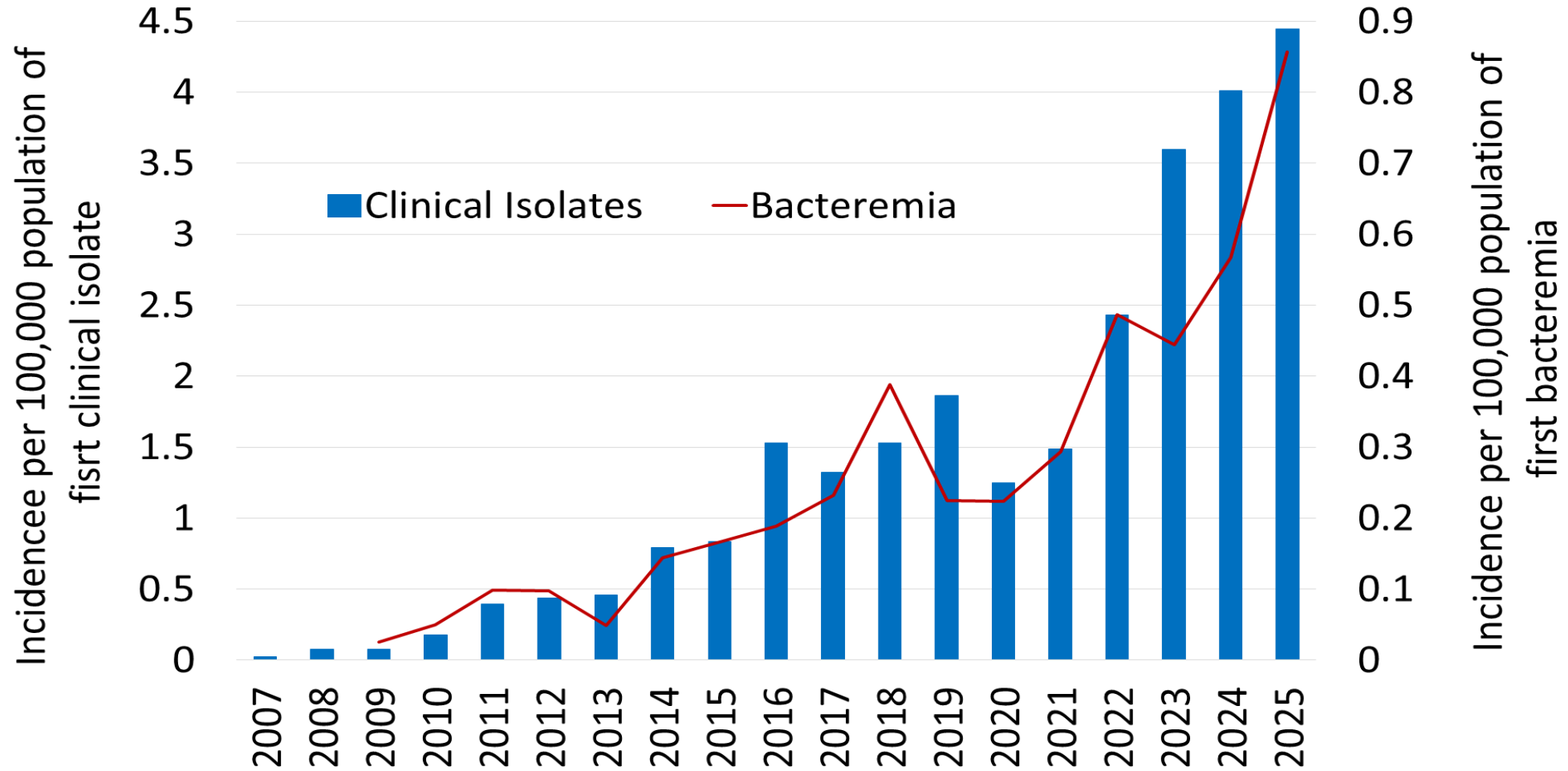
Starting in 2026: Candida auris; sterile site isolates of Candida spp.

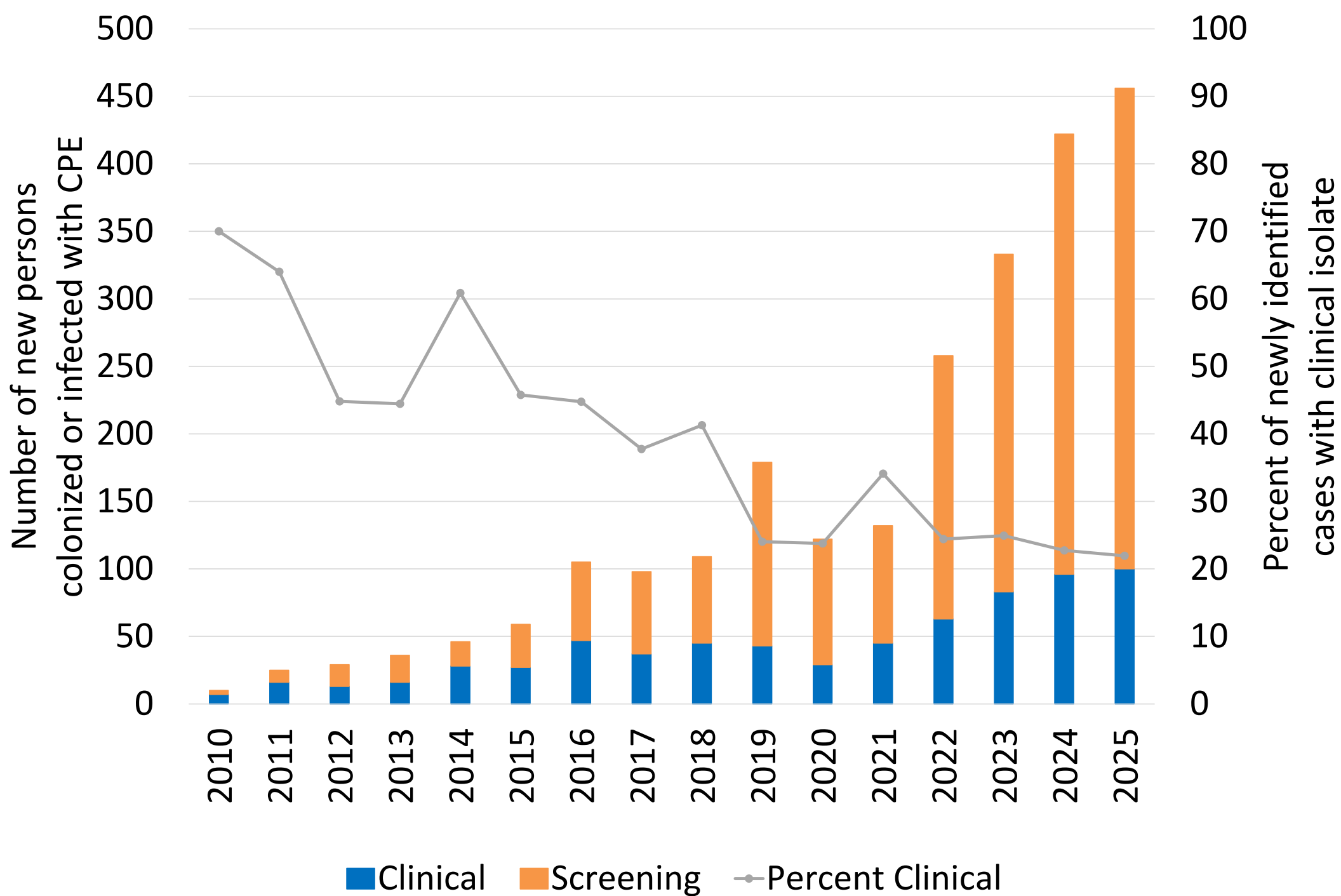
Under consideration: RSV associated hospitalization

Risk of recurrent invasive pneumococcal disease Calgary and Toronto, 2004-2022



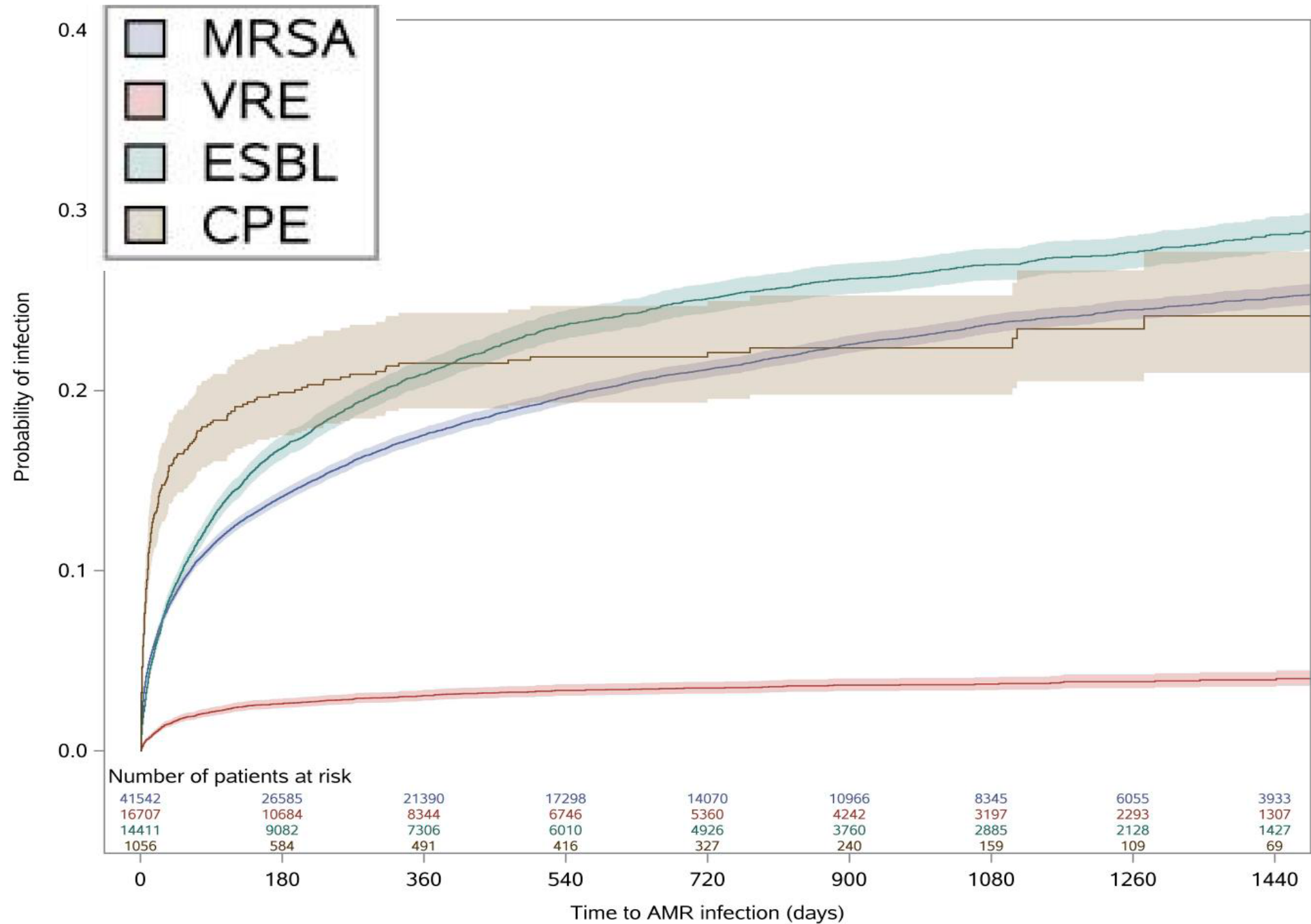
Incidence of CPE infections Toronto/Peel, 2007-2025





Blagojevic C. Open Forum Infect Dis. 2024;11:ofae712.

doi: 10.1093/ofid/ofae712.



CPE identification in clinical specimens and blood cultures in persons first identified as rectally colonized

First identified as screening	Later clinical isolate N/total (%)	Later bacteremia N/total (%)	Time to clinical isolate median (IQR)
Overall	130/1382 (9)	45/1382 (3)	31 days (12-122)
<i>Escherichia coli</i>	49/868 (6)	12/868 (1)	21 days (12-83)
<i>Klebsiella pneumoniae</i>	50/273 (18)	20/273 (7)	35 days (13-121)
<i>Enterobacter spp.</i>	13/139 (9)	6/139 (4)	32 days (13-97)
